



12900 Firestone Boulevard

SANTA FE SPRINGS, CALIFORNIA

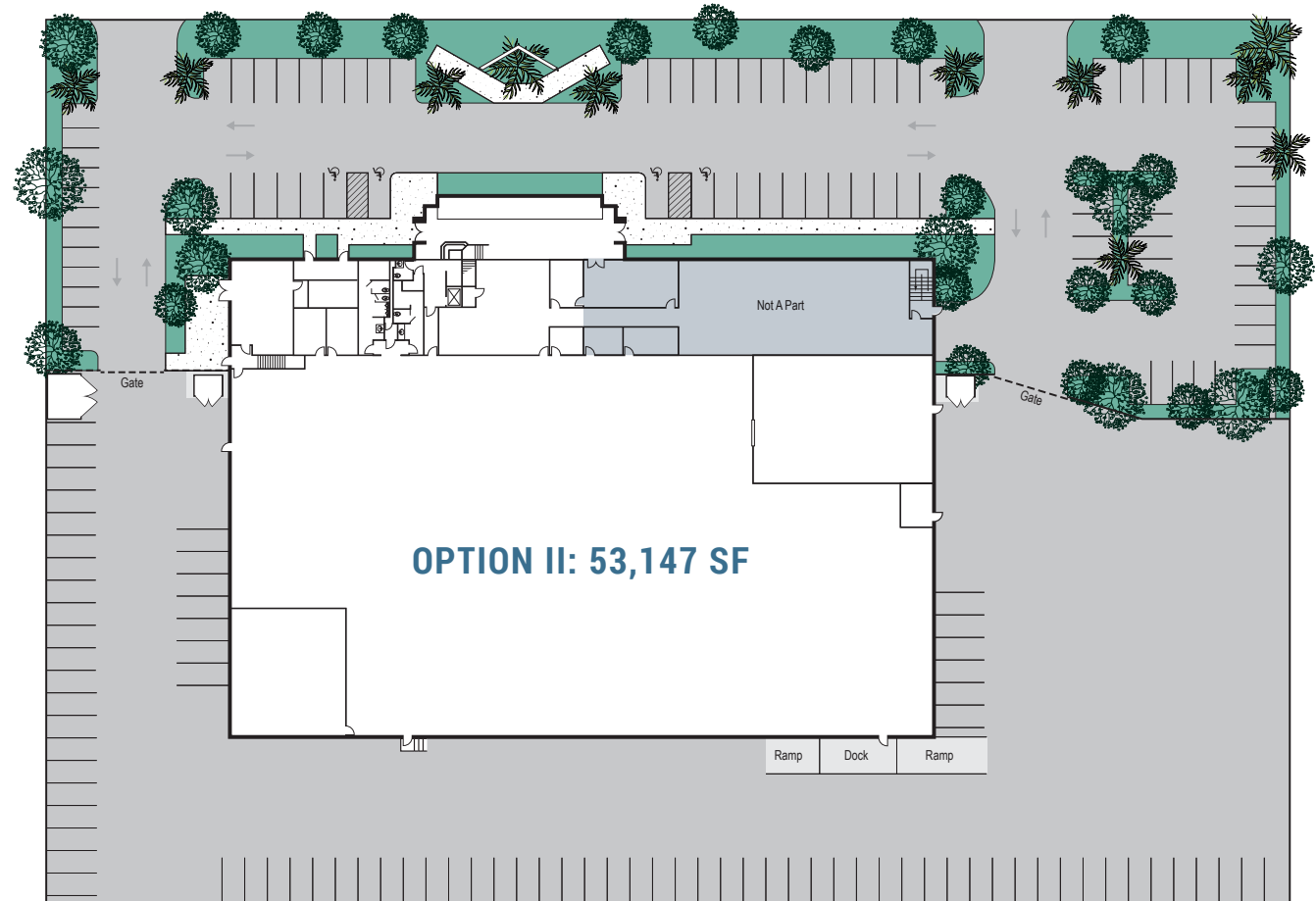
FOR LEASE // 58,916 SF OR 53,147 SF HIGH-IMAGE FREEWAY FRONTAGE FACILITY ON 3.58 ACRES

12900 Firestone Boulevard

SANTA FE SPRINGS
CALIFORNIA



FIRESTONE BLVD



OPTION II: 53,147 SF

Ramp Dock Ramp

SITE PLAN

Property Features

OPTION I: 58,916 SF

- ± 14,140 Office Area
- ± 4,395 SF Open HVAC Area

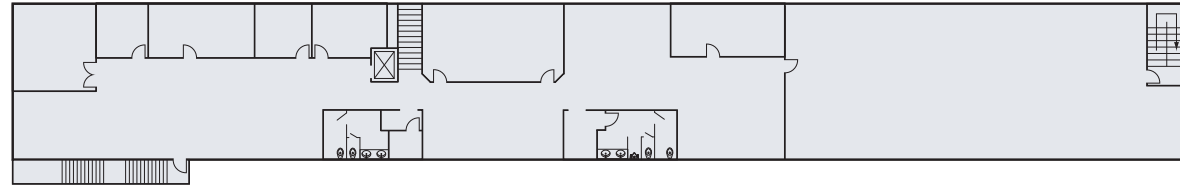
OPTION II: 53,147 SF

- ± 12,800 Office Area

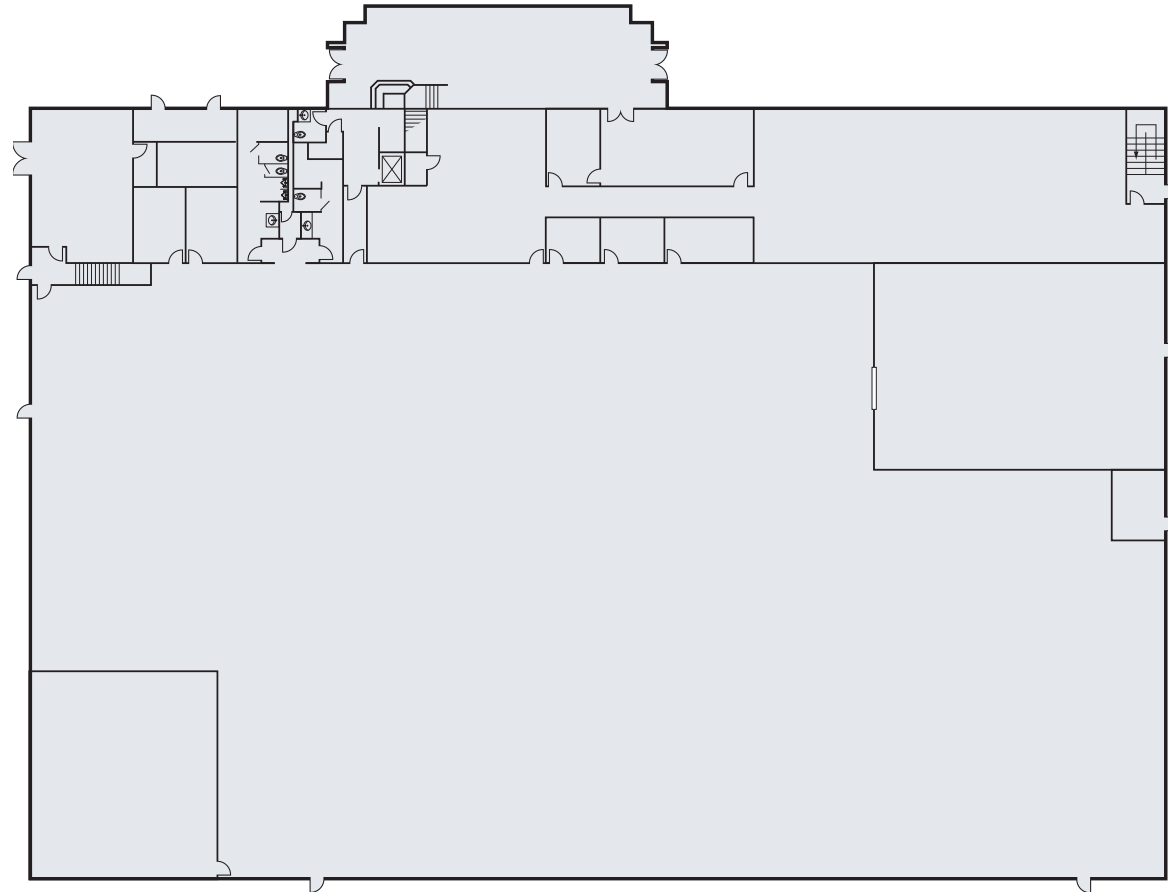
COMMON FEATURES:

- Major Santa Ana (5) Freeway Visibility
- Freeway Traffic Count of ± 225,000 Cars Per Day
- ± 1,920 SF Showroom Area
- 3.1:1,000 Parking Ratio (168 Spaces) / Expandable
- Two (2) Dock High, Four (4) Ground Level Doors
- ± 23' Minimum Warehouse Clearance
- 1,200 Amps, 277/480 Volt Power
- Fire Sprinklered
- Excellent Access to 5 Freeway

OPTION I: 58,916 SF



SECOND FLOOR



FIRST FLOOR

LEASING ADVISORY TEAM:

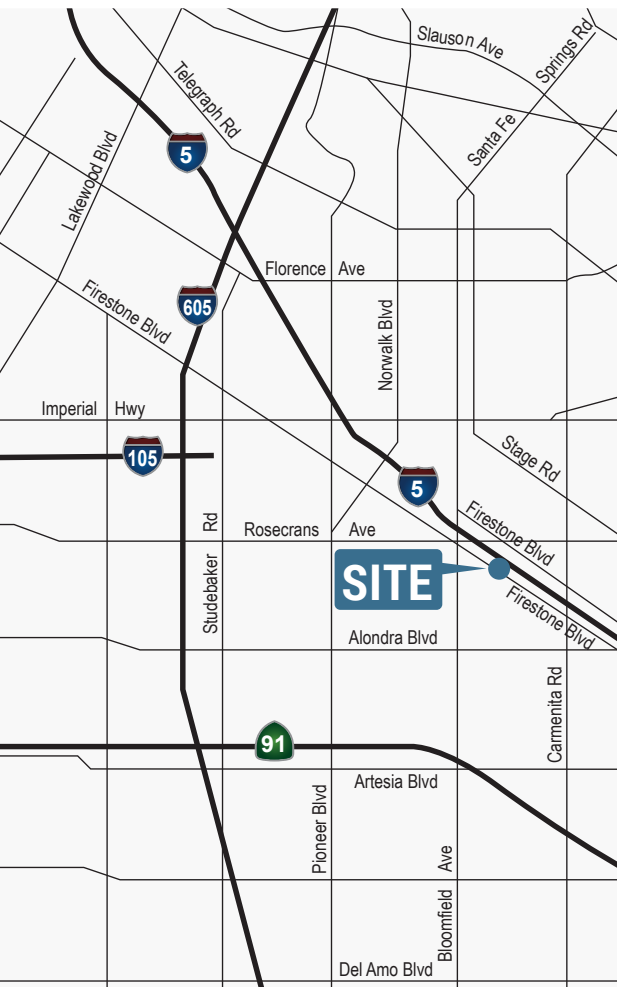
PETER CASTLETON
Senior Vice President
714.935.2353
castleton@voitco.com
Lic #00908641

MIKE BOUMA, SIOR
Senior Vice President
714.935.2340
mbouma@voitco.com
Lic #01070753

2400 E. Katella Ave.
Suite 750
Anaheim, CA 92806
714.978.7880
WWW.VOITCO.COM

Voit

REAL ESTATE SERVICES



12900 Firestone Boulevard

SANTA FE SPRINGS
CALIFORNIA

**LEASING
ADVISORY
TEAM:**

PETER CASTLETON
Senior Vice President
714.935.2353
castleton@voitco.com
Lic #00908641

MIKE BOUMA, SIOR
Senior Vice President
714.935.2340
mbouma@voitco.com
Lic #01070753

2400 E. Katella Ave.
Suite 750
Anaheim, CA 92806
714.978.7880
714.978.9431 Fax

Voit
REAL ESTATE SERVICES

Licensed as a Real Estate Salesperson
by the CA Bar of Real Estate.
©2018 Voit Real Estate Services, Inc.
All Rights Reserved. Lic #01991785