

FOR LEASE | ± 22,718 SF

7622 Woodwind Drive
Huntington Beach, CA



PROPERTY FEATURES

- High-Image Industrial / R&D Building
- 4.5 Acre Master Planned Business Park
- Fenced Yard / Parking Area
- Built in 2001
- ± 6,333 SF Office Area (Demo to Suit Possible)
- 2.5:1,000 SF Parking Ratio (Verify)
- Fire Sprinklered, .495 GPM, 2,000 ft.
- 24' Minimum Warehouse Clearance
- Two (2) 12' x 12' Ground Level Doors
- 1,200 Amps, 120/208 Volt, 3 Phase Power (Tenant to Verify)
- Close Proximity and Easy Access to 405 Freeway



MIKE BOUMA, SIOR
Senior Vice President
714.935.2340
mbouma@voitco.com
Lic. #01070753

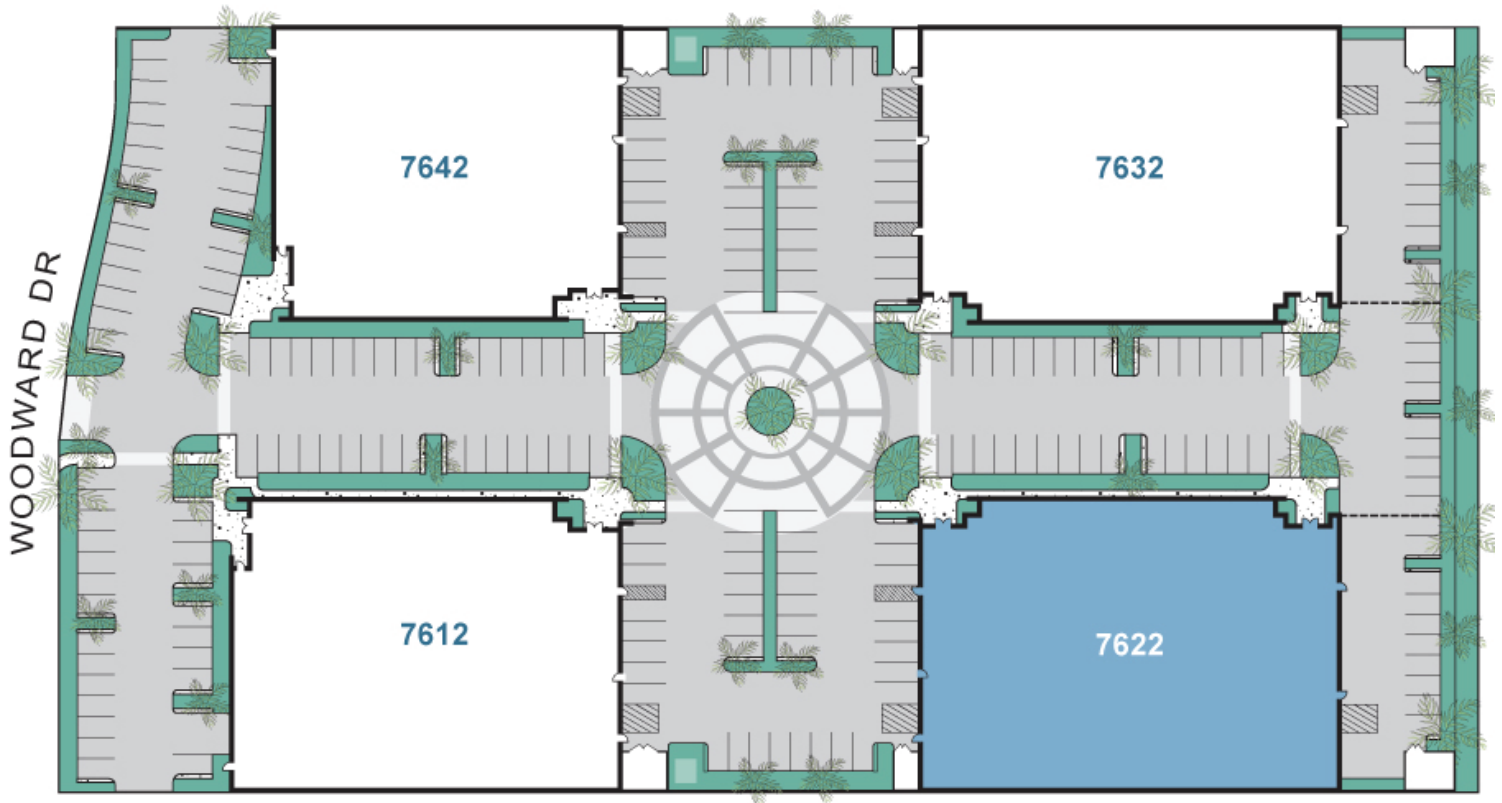
ERIC SMITH
Senior Associate
714.935.2310
esmith@voitco.com
Lic. #01940591

Voit
REAL ESTATE SERVICES

FOR LEASE | ± 22,718 SF

7622 Woodward Drive
Huntington Beach, CA

SITE PLAN



MIKE BOUMA, SIOR
Senior Vice President
714.935.2340
mbouma@voitco.com
Lic. #01070753

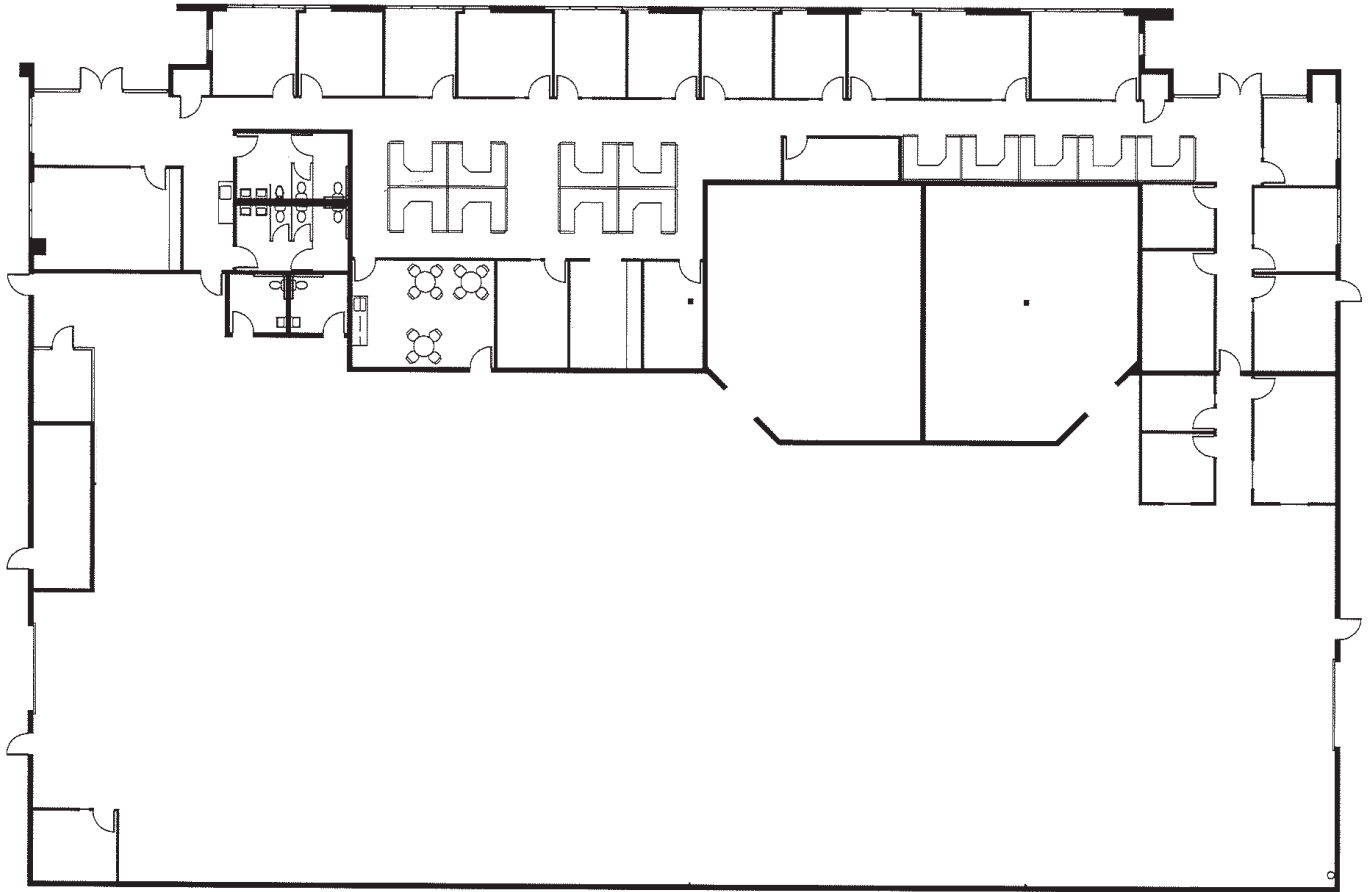
ERIC SMITH
Senior Associate
714.935.2310
esmith@voitco.com
Lic. #01940591

Voit
REAL ESTATE SERVICES

FOR LEASE | ± 22,718 SF

7622 Woodwind Drive
Huntington Beach, CA

FLOOR PLAN



MIKE BOUMA, SIOR
Senior Vice President
714.935.2340
mbouma@voitco.com
Lic. #01070753

ERIC SMITH
Senior Associate
714.935.2310
esmith@voitco.com
Lic. #01940591

Voit
REAL ESTATE SERVICES