

FOR LEASE | ± 7,609 SF

11787 Cardinal Circle
Garden Grove, CA



PROPERTY FEATURES

- Part of a Larger 16,000 SF Building
- ± 2,455 SF of Office
- Two (2) Ground Level Loading Doors
- 15' Warehouse Clearance
- Shared Fenced Yard
- Bonus Mezzanine Storage
- 2:1,000 Parking Ratio
- Excellent Manufacturing Unit
- Immediate Freeway Access



MIKE BOUMA, SIOR
Senior Vice President
714.935.2340
mbouma@voitco.com
Lic. #01070753

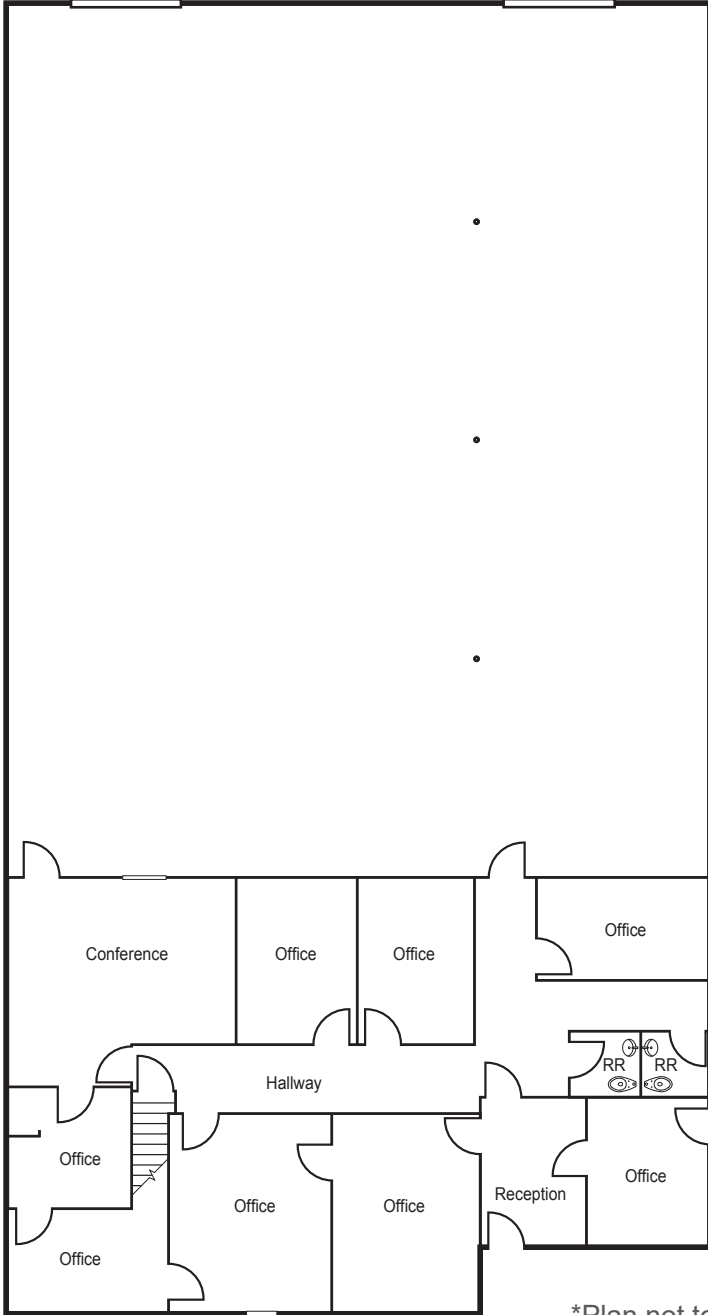
ERIC SMITH
Vice President
714.935.2310
esmith@voitco.com
Lic. #01940591

Voit
REAL ESTATE SERVICES

FOR LEASE | ± 7,609 SF

11787 Cardinal Circle
Garden Grove, CA

FLOOR PLAN & AERIAL



*Plan not to scale



MIKE BOUMA, SIOR
Senior Vice President
714.935.2340
mbouma@voitco.com
Lic. #01070753

ERIC SMITH
Vice President
714.935.2310
esmith@voitco.com
Lic. #01940591

Voit
REAL ESTATE SERVICES